

PRODUCTS CATALOG



WUHU ZONCN AUTOMATION EQUIPMENT CO.,LTD.

Factory Add.: No. 168, Sunshine Avenue, Xinwu Economic Development Zone
Wuhu City, Anhui Province, P.R.China.

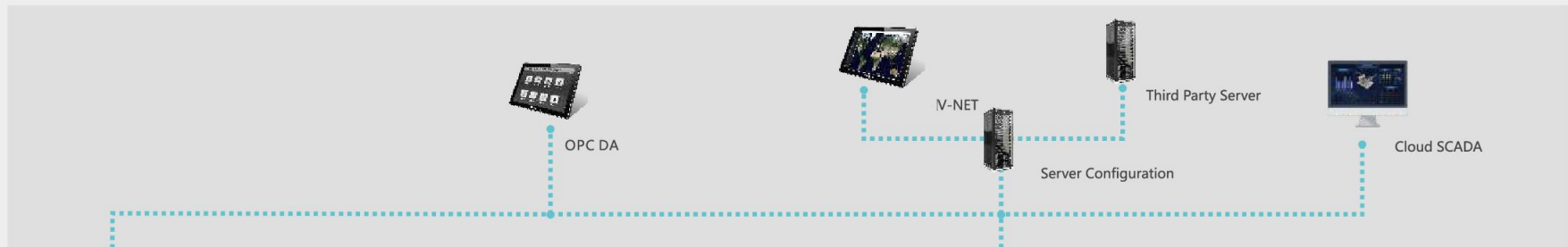
TEL.: 0086-553-2619975 Mobile & Wechat: 0086-13695679077

Email: info@whzoncn.com Website: www.whzoncn.com



2022 Edition

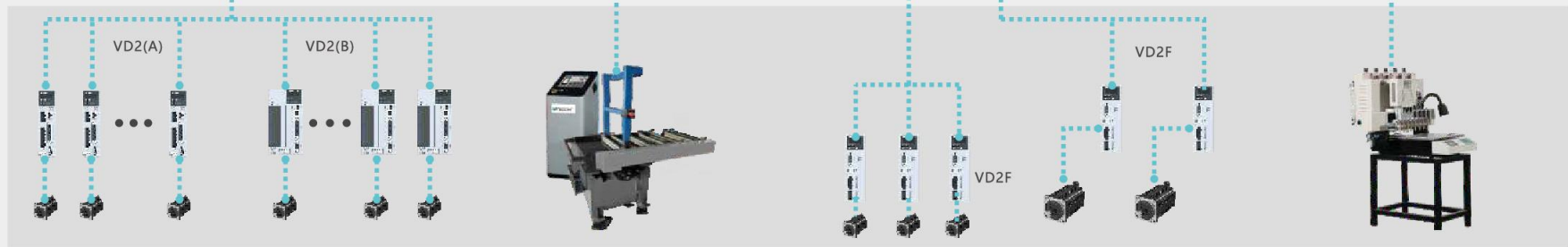
Data



Control



Drive



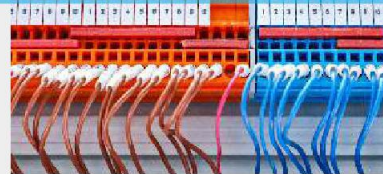
Smart Treatment for Water



Smart Factory



Automatic Plug Wiring Machine



Textile Machinery





Support 4G network and convenient networking

Collect data across different HMI and process data uniformly on the cloud platform

Remote monitoring and real-time control of crop growth

Application

Automatic Plug Wiring Machine, Packing Machinery, Face Mask Machinery, Winding Machine, Cutting Machine, Textile Machinery, Rubber Machinery, Municipal environmental protection.

Installment



Installation function
Users can set fixed installment or dynamic installment in HMI in advance to help customers effectively recover the unsettled balance within a certain period of time.

HMI Recipe



Users can configure the recipe file data on the HMI, and easily switch between different production modes.

User Permission Management



The HMI project can set the user permission and usage permission for different users to protect operation of the device.

Multi-language Display



VC HMI supports maximum 8 languages

Municipal Environmental Protection



Textile Machinery



Rubber Machinery



Face Mask Machinery



vcig series IoT HMI

ig IoT HMI, Create for The Internet of Things



vcpi 3000ie Series HMI

Quad Core CPU
Fast and Fluent Touch



Device Management

- Multi-device management
- Multi-authority account



Alarm Notification

- Alarm SMS push(4G models)
- Upload and download alarm records
- App



Fast



6 seconds for booting
100ms for screen switch

Numerous



300+ communication protocols
50+ objects

Remote Maintenance

- Sync data to cloud
- Remote access
- WVPN pass-through
- Remote debug



System Integration

- Cloud SCADA
- Big screen display
- Equipment connection



Unique



Unique installment function
Unique user permission management
Unique data encryption function

Reliable



Enhance software security
Better communication Stability
Waterproof and heat cooling

ig SPECIFICATIONS

Basic HMI



Model	VCPI3070ig	VCPI3102ig	VCPI8150ig
Item	Specifications		
CPU	Cortex A35 1.2GHz		
Touch Screen	Resistive		
Display	Screen Size	7 Inch	10.2 Inch
	Resolution	800*480	1024*600
	Brightness	250 cd/m ²	350 cd/m ²
	Backlight Type	LED	
	Backlight Life	50,000 Hours	
	Colors	16,000k colors	2,60k colors
Storage	Flash	128 MB	4GB
	RAM	DDRIII 128MB	DDRIII 512MB
	SD Card	YES	YES (TF card)
I/O	USB	USB Host: USB 2.0 x 1; USB Client: USB 2.0 x 1 (cannot be used at the same time)	
	Serial Port	Type 1: COM1(RS232), COM1(RS485), COM1(RS485) Type 2: COM1(RS232), COM1(RS422), COM1(RS485)	
	Ethernet	YES	
	CAN	N/A	
	4G/WIFI Module	Optional	
Permanent Calendar	Built-in		
Power	Power Supply	24V DC (12~28V DC)	
	Power Consumption	<8W	<10W
Dimension	Enclosure	Plastic+ABS(Polycarbonate)	
	Dimension(mm)	201.2W*147.2H*39.0D	272.0W*191.0H*41.5D
	Mounting Size(mm)	192.0W*138.0H	260.0W*179.0H
	Net Weight (KG)	0.52	1.02
Environment	Protection	IP65 (Front panel)	
	Temperature	Storage: -20℃~70℃ Working: -10℃~55℃	
	Humidity	10 ~ 90%RH (Non-condensing)	
	Vibration Resistance	10 ~ 25 Hz (X, Y, Z direction 2G/30 minutes)	
CE Certification	CE Marked		
FCC Certification	FCC Class A		
Programming Software	PI Studio		
Software	IoT Service (optional)	Real-time Monitoring Points: 100	Real-time Monitoring Points: 300
		Alarm Monitoring Points: 20	Alarm Monitoring Points: 200
		History Monitoring Points: 50	History Monitoring Points: 100
	VPN	History Storage: 60 days / 1 millions	History Storage: 120 days / 1
		YES	

3000ie SPECIFICATIONS

Basic HMI



Model	VCPI3035ie	VCPI3043ie	VCPI3043ieS-N
Item	Specifications		
CPU	Cortex A35 1.2GHz		
Touch Screen	Resistive		
Display	Screen Size	3.5 Inch	4.3 Inch
	Resolution	320*240	480*272
	Brightness	300cd/ m ²	
	Backlight Type	LED	
	Backlight Life Time	50,000 Hours	
	Colors	16,000k colors	
Storage	Flash	128MB	
	RAM	DDRII 64MB	
	SD Card	N/A	
	RTC	Real Time Clock	
I/O	Micro-USB	USB 2.0 x 1	
	Serial Port	Type 1: COM1(RS232), COM1(RS485)	Type 1: COM1(RS232), COM1(RS485)
		Type 2: COM1(RS232), COM1(RS422)	Type 2: COM1(RS232), COM1(RS422)
		Type 1: COM1(RS232), COM1(RS485), COM1(RS485)	Type 1: COM1(RS232), COM1(RS485), COM1(RS485)
	Ethernet	N/A	YES
Permanent Calendar	Built-in		
Power	Power Supply	24V DC(12~28V DC)	
	Power Consumption	< 5W	
Dimension	Enclosure	Plastic+ABS(Polycarbonate)	
	Dimension(mm)	96.0W*81.0W*33D	142.0W*86.0H*30.3D
	Mounting Size (mm)	91.0W*73.0D	131.0W*78.0H
	Net Weight (KG)	0.14	0.19
Environment	Protection	IP65 (Front panel)	
	Temperature	Storage: -20℃~70℃ ; Working: -10℃~55℃	
	Humidity	10 ~ 90%RH (Non-condensing)	
	Vibration Resistance	10 ~ 25 Hz (X, Y, Z direction 2G/30 minutes)	
CE Certification	CE Marked		
FCC Certification	FCC Class A		
Programming Software	PI Studio		
Remote Control	N/A		

3000ie SPECIFICATIONS

Basic HMI



Model		VCPI3070ie	VCPI3102ie
Item	Specifications		
CPU	Cortex A35 1.2GHz		
Touch Screen	Resistive		
Display	Screen Size	7 Inch	10.2 Inch
	Resolution	800*480	1024*600
	Brightness	250 cd/m ²	350 cd/m ²
	Backlight Type	LED	
	Backlight Life Time	50,000 Hours	
	Colors	16,000k colors	
Storage	Flash	128MB	
	RAM	DDRII 64MB	
	SD Card	NA	
Ports	USB	USB Host: USB 2.0 x 1 ; USB Client: USB 2.0 x 1	
	Serial Port	Type 1: COM1(RS232), COM1(RS485)	
		Type 2: COM1(RS232), COM1(RS422)	
	Ethernet	N/A	
Permanent Calendar	Built-in		
Power	Power Supply	24V DC(12~28V DC)	
	Power Consumption	< 8W	< 10W
Dimension	Enclosure	Plastic+ABS(Polycarbonate)	
	Dimension(mm)	201.2W*147.2H*39.0D	272.0W*191.0H*41.5D
	Mounting Size (mm)	192.0W*138.0H	260.0W*179.0H
	Net Weight (KG)	0.52	1.02
Environment	Protection	IP65 (Front panel)	
	Temperature	Storage: -20℃~70℃ ; Working: -10℃~55℃	
	Humidity	10 ~ 90%RH(Non-condensing)	
	Vibration Resistance	10 ~ 25 Hz (X, Y, Z direction 2G/30 minutes)	
CE Certification	CE Marked		
FCC Certification	FCC Class A		
Programming Software	PI Studio		
Remote Control	N/A		

3000i SPECIFICATIONS

Basic HMI



Model		VCPI3070i	VCPI3070i-N	VCPI3102i	VCPI3070i-SL	VCPI3070i-N-SL
Item	Specifications					
CPU	Cortex A7 528MHz					
Touch Screen	High precision four-wire resistive					
Display	Screen Size	7 Inch		10.2 Inch		7 Inch
	Resolution	800*480		1024*600		800*480
	Brightness	250 cd/m ²		350 cd/m ²		250 cd/m ²
	Backlight Type	LED				
	Backlight Life Time	50,000 Hours				
	Colors	16,000k colors				
Storage	Flash	128MB				
	RAM	DDRIII 128MB				
	SD Card	NA				
Ports	USB	USB Host: USB 2.0 x 1 ; USB Client: USB 2.0 x 1				
	Serial Port	Type 1: COM1(RS232), COM1(RS485)				
		Type 2: COM1(RS232), COM1(RS422)				
	Ethernet	N/A	YES	YES	N/A	YES
Permanent Calendar	Built-in					
Power	Power Supply	24V DC(12~28V DC)				
	Power Consumption	< 8W		< 10W		< 8W
Dimension	Enclosure	Plastic+ABS(Polycarbonate)				
	Dimension(mm)	201.2W*147.2H*39.0D		272.0W*190.0H*41.5D		191.2W*137.2H*41.0D
	Mounting Size (mm)	192.0W*138.0H		260.0W*179.0H		172.0W*111.0H
	Net Weight (KG)	0.51		1.00		0.52
Environment	Protection	IP65 (Front panel)				
	Temperature	Storage: -20℃~70℃ ; Working: -10℃~55℃				
	Humidity	10 ~ 85%RH(Non-condensing)				
	Vibration Resistance	10 ~ 25 Hz (X, Y, Z direction 2G/30 minutes)				
CE Certification	CE Marked					
FCC Certification	FCC Class A					
Programming Software	PI Studio					
Remote Control	N/A					